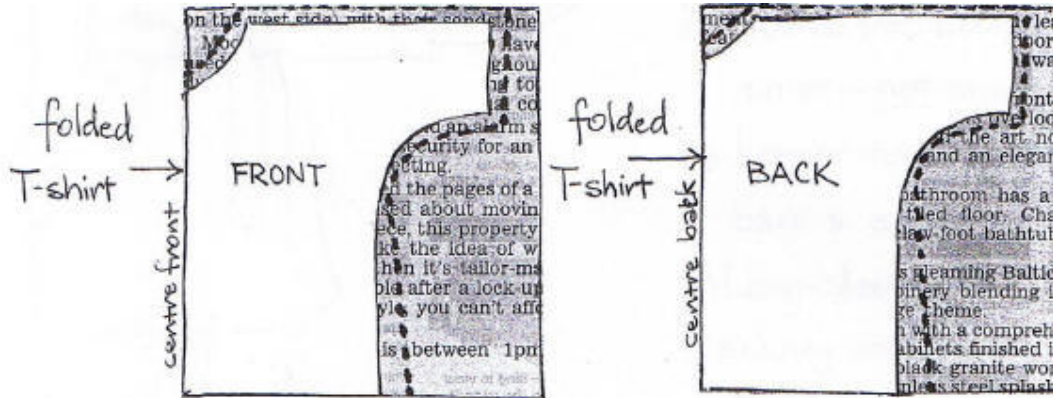


Medieval Tunic (Men's & Women's) Based on a T-Shirt

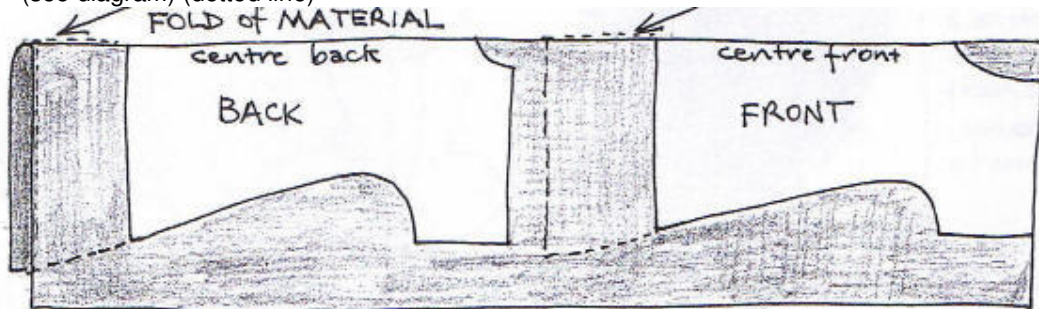
J Stratford

(Try a rough one using an old sheet first if you're not sure of what you are doing)

1. Use a T-shirt that fits your loosely as a basic pattern
2. Fold T-shirt exactly down the middle and draw around this half on newspaper (as in diagram below), putting centre front fold and centre back fold on a straight edge of newspaper



3. Draw a line around T-shirt, adding 1½ cms to allow for seams (dotted line) and extra at bottom edge for more width at hemline
4. cut out the paper patterns
5. Place patterns of folded plain coloured knit material (cheap at D.K's or Spotlight) with centre front and centre back on fold of materials Measure down the fold the length of tunic you want
6. (see diagram) (dotted line)



7. Cut out fabric
8. Place 2 pieces right side of fabric together, stitch side, shoulder and sleeve seams,
9. Neaten neck edge by folding under ½ cm of fabric and stitch on outside; pinup and hem to required length. If you want a side split, stitch side seams to required length.